

HOP	DISTRICT	COUNTY	TOWNSHIP	BOROUGH	ROUTE	SECTION	TOTAL SHEETS
	8-0	FRANKLIN		GREENCASTLE	0011		5

# ANTRIM WAY (S.R.0011) & WALTER AVENUE

## ADA RAMP IMPROVEMENTS

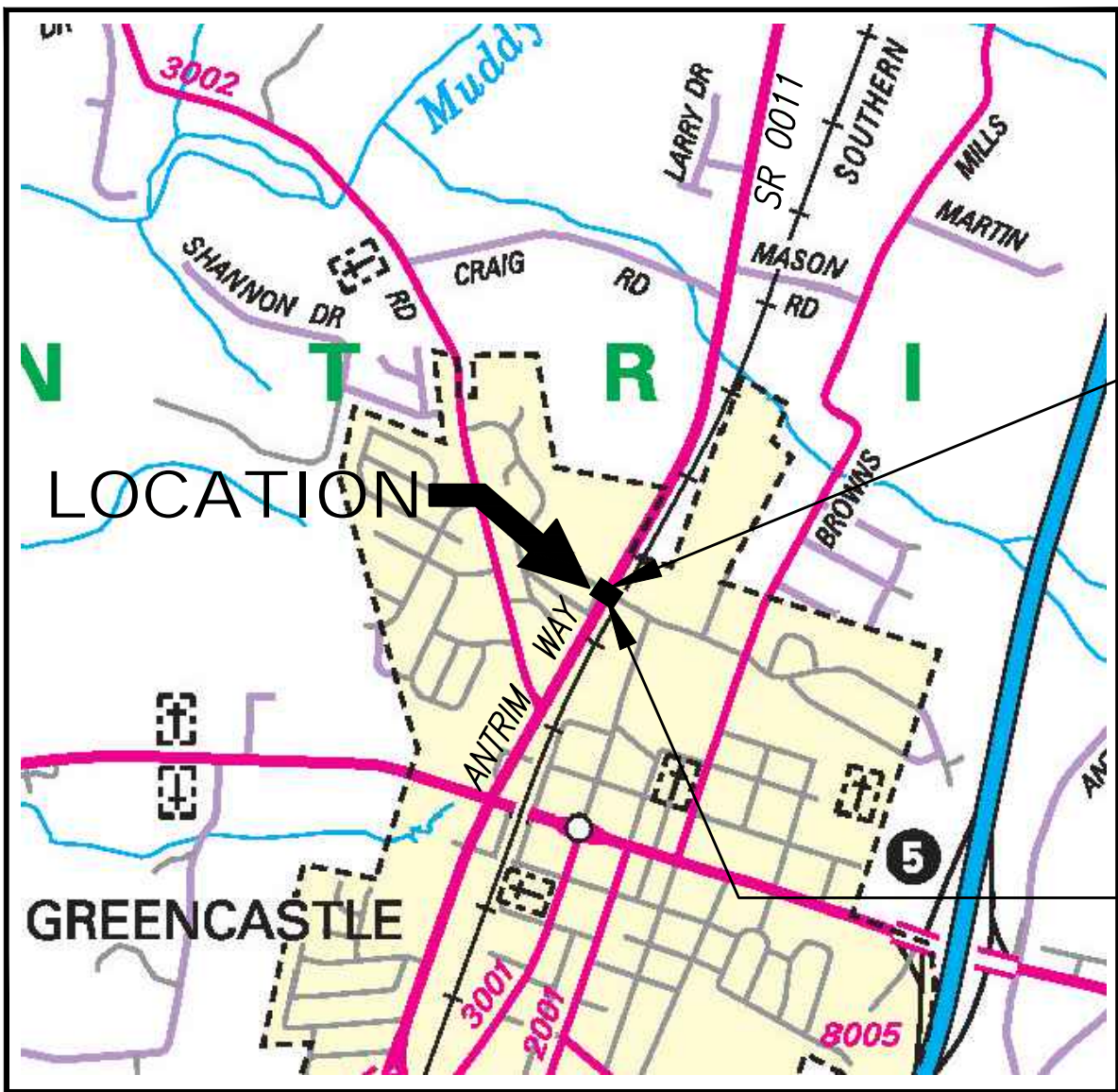
### GREENCASTLE BOROUGH FRANKLIN COUNTY, PENNSYLVANIA

FROM STA. 286+03 TO STA. 288+05 LENGTH 202.00 FT. 0.038 MI.  
FROM SEG. 0130 OFFSET 1915 TO SEG. 0130 OFFSET 2117

EPS APPLICATION NUMBER 353855  
GREENCASTLE BOROUGH  
60 NORTH WASHINGTON STREET  
GREENCASTLE, PA 17225  
(717) 597-7143

#### SHEET INDEX

TITLE PLAN	1
NOTES	2
CONSTRUCTION PLAN & DETAILS	3
SIGNING & PAVEMENT MARKING PLAN (SPM)	4
ADA RAMP DETAILS	5



LOCATION MAP  
SCALE: 1"=2,000'

LEGEND	
	STATE ROAD
	TOWNSHIP ROAD
	MUNICIPAL BOUNDARY
	WORK AREA
	STREAM

#### DESIGN DESIGNATION

<b>S.R.0011</b>	
HIGHWAY CLASSIFICATION	— URBAN PRINCIPAL ARTERIAL
ROADWAY TYPOLOGY	— COMMUNITY
DESIGN SPEED	— 40 MPH
PAVEMENT WIDTH	— 33'
SHOULDER WIDTH	— 7'-8'

#### TRAFFIC DATA

CURRENT ADT	— 9,669 (YEAR 2024)
DESIGN YEAR ADT	— 9,988 (YEAR 2029)
DHV	— 870
D	— 68
T	— 18
TRUCK	— 9%

#### SCALE

HORIZONTAL	25 FEET	0	25 FEET
VERTICAL	5 FEET	0	5 FEET



LOCATIONS OF EXISTING UNDERGROUND UTILITIES ARE BASED UPON SURFACE EVIDENCE AND EXISTING DRAWINGS AND ARE NOT GUARANTEED TO BE COMPLETE OR ACCURATE. CONTRACTOR SHOULD CONTACT THE PA. ONE CALL SYSTEM (811) PRIOR TO ANY EXCAVATION AS REQUIRED BY PA ACT 287 OF 1974, AS AMENDED OF PA ACT 50 OF 2017, EFFECTIVE APRIL 28, 2018.  
PA ONE CALL SERIAL NO. 20242811916

#### UTILITY & GOVERNING AGENCIES CONTACT LIST:

BRIGHTSPEED  
1120 S TRYON ST, SUITE 700  
CHARLOTTE, NC 28203  
DREW LANE  
andrew.t.lane@brightspeed.com  
833-692-2773

COLUMBIA GAS OF PA  
10750 WELSH RUN ROAD  
GREENCASTLE, PA 17225  
STEPHEN CARROLL  
stephen\_carroll@tcenergy.com  
717-597-8064

COMCAST CABLE COMMUNICATIONS INC  
1701 JOHN F. KENNEDY BLVD  
PHILADELPHIA, PA 19103  
ROBERT HARVEY  
bob\_harvey@cable.comcast.com  
215-665-1700

WEST PENN POWER  
800 CABIN HILL DRIVE  
GREENSBURG, PA 15601  
USIC LOCATING SERVICE  
PERSONNEL  
800-686-0021

LUMEN FORMERLY LEVEL 3  
5480 FELTI ROAD  
HOPKINS, MN 55305  
866-697-5881

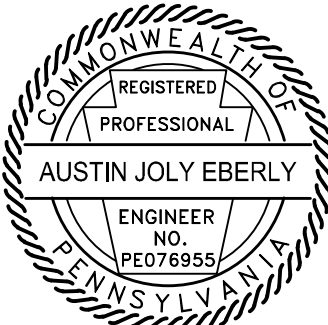
COGENT COMMUNICATIONS  
2450 N. STREET NW  
WASHINGTON, DC 20037  
dc@cogentco.com  
877-726-4368

WINDSTREAM ENTERPRISE /  
WHOLESALE  
PO BOX 9001013  
LOUISVILLE, KY 40290  
DAMAGE GROUP PERSONNEL  
BRADLEY HAHN  
WHOLESALE: 800-600-5050  
ENTERPRISE: 855-465-0204

GREENCASTLE BOROUGH  
60 N. WASHINGTON STREET  
GREENCASTLE, PA 17225  
EMILEE LITTLE  
office@greencastlepa.gov  
717-597-7143

PREPARED BY:

**TRG**  
TRANSPORTATION RESOURCE GROUP, INC.  
TRANSPORTATION RESOURCE GROUP, INC.  
2 E. MARKET STREET - SUITE 2  
YORK, PENNSYLVANIA 17401



*Austin J. Eberly*  
REG. PROFESSIONAL ENGINEER

DATE: 1-10-2025



## GENERAL PERMIT NOTES CONTINUED:

22. ALL PROPOSED PEDESTRIAN FACILITIES REFLECTED ON THESE PLANS, INCLUDING THOSE THAT ARE OUTSIDE OF PENNDOT LEGAL RIGHT-OF-WAY, SHALL BE CONSTRUCTED TO COMPLY WITH THE REQUIREMENTS OF THE U.S. ACCESS BOARD, PUBLIC RIGHT-OF-WAY ACCESSIBILITY GUIDELINES (PROWAG) OF THE ACCESSIBILITY GUIDELINES OF BUILDINGS AND FACILITIES (ADAAG). PENNDOT DESIGN MANUAL PART 2, CHAPTER 6, AND PENNDOT STANDARDS FOR ROADWAY CONSTRUCTION (PUBLICATION 72M, RC-67M) PROVIDE GUIDANCE ON ADA ACCESSIBLE DESIGN FOR PEDESTRIAN FACILITIES AND CAN BE UTILIZED FOR REFERENCE.
23. ALL SLOPE MEASUREMENTS WILL BE INSPECTED / VERIFIED WITH A 2-FOOT SMART LEVEL.
24. THE CONTRACTOR IS RESPONSIBLE FOR REMOVING ANY DEBRIS AND TO FLUSH OUT ALL EXISTING AND PROPOSED STORM DRAINAGE FACILITIES WITHIN THE PROJECT LIMITS AT THE COMPLETION OF CONSTRUCTION.
25. MODIFICATIONS TO EXISTING DRAINAGE STRUCTURES MAY RESULT IN THE NEED TO REPLACE THE STRUCTURE. REPLACEMENT WILL BE AT THE DISCRETION OF THE INSPECTOR-IN-CHARGE.
26. STRUCTURAL STEEL BICYCLE SAFE GRATES MUST BE PROVIDED FOR ALL INLETS WITHIN THE ROADWAY PAVEMENT OF THOSE THAT MAY RECEIVE BICYCLE TRAFFIC (PENNDOT PUBLICATION 72M, RC-45M).
27. THE RESPONSIBILITY FOR ENSURING THAT ALL UTILITY POLES WITHIN THE PROPOSED PAVING ARE RELOCATED OUTSIDE OF THE PAVED AREAS AND SHOULDERS SHALL BE THAT OF THE PERMITEE. THE UTILITY POLES MUST BE RELOCATED BEFORE THE START OF ANY PAVING OPERATIONS.
28. THE PERMITEE IS RESPONSIBLE FOR THE COORDINATION OF RELOCATING ANY CONFLICTING UTILITIES WHICH ARE A RESULT OF THESE IMPROVEMENTS.
29. ALL UTILITY RELOCATION PERMITS TAKE PRECEDENCE OVER THE UTILITY RELOCATION POSITIONS SHOWN ON THE HOP PLANS.
30. SEE LIST OF PUBLIC UTILITIES ON TITLE SHEET.

31. SOURCE OF RIGHT-OF-WAY ON S.R.0011 IS:  
RIGHT OF WAY ON S.R.0011, STA.286+03 TO STA.288+05 IS 120 FEET BASED ON LR 36-3B  
(BIN 32 F199) APPROVED BY THE GOVERNOR ON DECEMBER 16, 1953.

33. CONSTRUCT ALL PROPOSED PEDESTRIAN FACILITIES ON THESE PLANS TO COMPLY WITH THE AMERICANS WITH DISABILITIES ACT, PUBLIC RIGHT-OF-WAY ACCESSIBILITY GUIDELINES (PROWAG), AND THE 2024 ADA STANDARDS.

34. THE CONTRACTOR IS REQUIRED TO NOTIFY THE DEPARTMENT AND SUBMIT AN ALLEGED VIOLATION REPORT (AVR) TO THE PA PUBLIC UTILITY COMMISSION THROUGH THE PA ONE CALL SYSTEM, [www.pa1call.org](http://www.pa1call.org), WITHIN TEN (10) BUSINESS DAYS AFTER A UTILITY LINE IS STRUCK, DAMAGED OR PREVIOUS DAMAGE IS DISCOVERED AS REQUIRED BY PENNSYLVANIA'S UNDERGROUND UTILITY LINE PROTECTION LAW ACT 50 (P.L.852, NO. 287 AMENDED OCTOBER 30, 2017).

35. IF PROPOSED IMPROVEMENTS REQUIRE THE RELOCATION OF PENNDOT FIBER OPTIC CABLE(S), THE PERMITTEE IS RESPONSIBLE FOR THE FULL EXPENSE OF RELOCATING THESE FACILITIES.

36. CLEAN ALL EXISTING DRAINAGE FACILITIES (INCLUDING BUT NOT LIMITED TO INLETS, MANHOLES AND PIPES) WITHIN THE PROJECT LIMITS.

37. VERIFY EXISTING AND PROPOSED DRAINAGE INVERT AND TG ELEVATIONS PRIOR TO FINAL PLACEMENTS. ANY DISCREPANCIES BETWEEN PLAN INFORMATION AND ACTUAL FIELD MEASUREMENTS SHALL BE BROUGHT TO THE ATTENTION OF THE INSPECTOR-IN-CHARGE IMMEDIATELY.

38. TRG, INC. IS NOT RESPONSIBLE FOR THE ACCURACY OF THE LOCATIONS, DEPTHS, SIZES OR MATERIALS OF THE UNDERGROUND UTILITIES SHOWN ON THIS PLAN. THE CONTRACTOR MUST VERIFY THE EXISTING LOCATIONS AND DEPTHS OF UNDERGROUND UTILITIES. UTILITIES LOCATIONS AND DEPTHS SHOWN ON THE PLANS ARE APPROXIMATE.

39. ALL SURVEY BASE PLANS, VERTICAL CONTROL, ELEVATIONS, DIMENSIONS AND EXISTING DRAINAGE PROVIDED BY ARRO CONSULTING, INC. CONTRACTOR MUST FIELD VERIFY ALL CONDITIONS AND DIMENSIONS BEFORE CONSTRUCTION COMMENCES AND NOTIFY THE ENGINEER IF THERE ARE ANY DISCREPANCIES BETWEEN THE PLANS AND ACTUAL FIELD CONDITIONS.

40. DRAINAGE INSTALLED BY THIS PERMIT IS THE PRIMARY RESPONSIBILITY OF THE LOCAL GOVERNMENT TO CONTINUALLY MAINTAIN OR REPLACE. LANDOWNER CO-PERMITTEE IS RESPONSIBLE FOR PROVIDING FUNDING TO THE LOCAL GOVERNMENT TO OFFSET FUTURE MAINTENANCE COSTS ASSOCIATED WITH THE PERMITTED DRAINAGE FACILITY(IES).

41. ALL LONGITUDINAL PAVEMENT MARKINGS ARE REQUIRED TO BE EPOXY OR A DOUBLE APPLICATION OF WATERBORNE PAINT.

42.ACCESS SIGNING AND PAVEMENT MARKINGS AUTHORIZED BY THE PERMIT MUST BE MAINTAINED BY THE PERMITTEE.

MAINTENANCE AND PROTECTION OF TRAFFIC (MPT) NOTES CONTINUED:

- WORK RESTRICTIONS:

1. NO TRAFFIC RESTRICTIONS OR LANE CLOSURES ARE PERMITTED BETWEEN 6:00 AM AND 9:00 AM AND BETWEEN 3:00 PM AND 6:00 PM MONDAYS THROUGH FRIDAYS, OR ON LEGAL HOLIDAYS AND WEEKENDS ASSOCIATED WITH LEGAL HOLIDAYS. ALL RESTRICTIONS AND CLOSURES ARE TO BE REMOVED BY NOON ON THE DAY PRIOR TO THE LEGAL HOLIDAY.
2. NO PAVING, LANE RESTRICTIONS, OR CLOSURES ON S.R.0011 BETWEEN 6:00AM TO 9:00AM AND 3:00PM TO 6:00PM WITHOUT PENNDOT APPROVAL.
3. NO LANE RESTRICTIONS OR CLOSURES ALONG S.R.0011 WILL BE PERMITTED ON THE FOLLOWING DATES: NATIONAL AND STATE HOLIDAYS.

SEQUENCE NOTES:

1. MOBILIZE FOR CONSTRUCTION.
2. INSTALL LONG-TERM SIGNING AND TEMPORARY TRAFFIC CONTROL DEVICES.
3. INSTALL E&SPC MEASURES AS INDICATED AND IN ACCORDANCE WITH THE APPROVED E&SPC PLAN.

COMMONWEALTH OF PENNSYLVANIA  
REGISTERED PROFESSIONAL  
AUSTIN JOLY EBERLY  
ENGINEER NO. PE076955

2 E. Market Street - Suite 2  
York, Pennsylvania 17401-1206  
Tel: (717) 846-4660  
[www.consultftrg.com](http://www.consultftrg.com)



Project No: 109.007.24

File: HOP Sub 2 Supp 1

Date: 10-10-2024

Drawn By: JAT

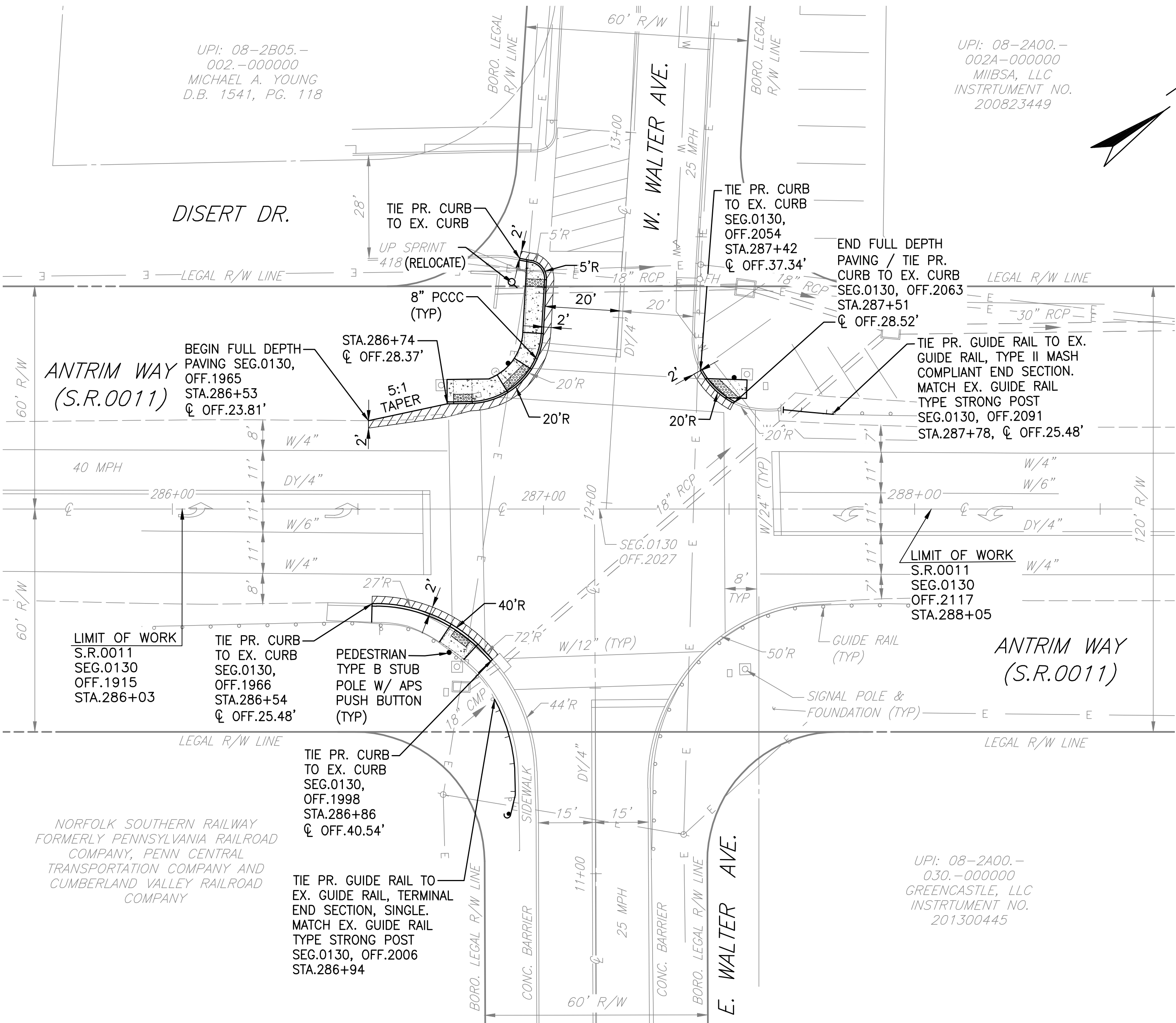
Checked By: AJE

FRANKLIN COUNTY, PENNSYLVANIA

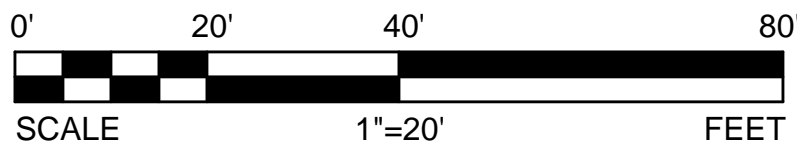
GREENCASTLE BOROUGH  
HIGHWAY OCCUPANCY PERMIT PLANS  
FOR THE  
ANTRIM WAY (S.R.0011) & WALTER AVE  
ADA RAMP IMPROVEMENTS

## NOTES





CONSTRUCTION PLAN



LEGEND

	EXISTING PROPERTY LINE		EXISTING UTILITY POLE
	LEGAL RIGHT-OF-WAY LINE		PROPOSED UTILITY POLE
	EXISTING STORM SEWER/INLET LINE		EXISTING SOLID WHITE LINE/WIDTH
	EXISTING GUIDE RAIL		EXISTING DOUBLE SOLID YELLOW LINE/WIDTH
	PROPOSED GUIDE RAIL		PENNDOT FULL DEPTH PAVEMENT SECTION
	PROPOSED PLAIN CEMENT CONCRETE CURB (PLCC)		CONCRETE
	PROPOSED DETECTABLE WARNING SURFACE (DWS)		
	PROPOSED PEDESTRIAN TYPE B STUB POLE		

PAVING NOTES

THE PROPOSED PAVEMENT SECTION MUST BE AS INDICATED ON THE PLAN, OR MATCH THE EXISTING AS FOUND IN THE FIELD, WHICHEVER IS GREATER.

HOT SEAL ALL JOINTS WITH 12 INCH WIDE PG 64S-22.

SAWCUT EXISTING PAVEMENT WHERE PROPOSED FULL DEPTH PAVING WILL BE INSTALLED.

APPLY ASPHALT TACK COAT BETWEEN EACH PAVEMENT LAYER.

A MINIMUM OF 2' WIDE FULL DEPTH PAVEMENT CONSTRUCTION IS REQUIRED.

IF CALIFORNIA BEARING RATIO (CBR) VALUES INDICATE THAT THE SUBGRADE IS UNSUITABLE, IT WILL BE REPLACED WITH SUITABLE MATERIAL

EXPOSED VERTICAL AND HORIZONTAL SURFACES SHALL BE PREPARED AS PER PUB 408, SECT. 413.3(g)

1.5" SPAV, HMA WRG, 64-22, 12.5MM, SRL-H - 33', 2005  
2.0" SPAV, HMA BNDR LVL, 64-22, 19MM - 33', 2005  
9.0" RCCP 61.5' JNT SPACING/DOWEL - 33', 1954  
6.0" SPECIAL SUBBASE - 33', 1954  
TOTAL: 18.5" PAVED: 12.5"

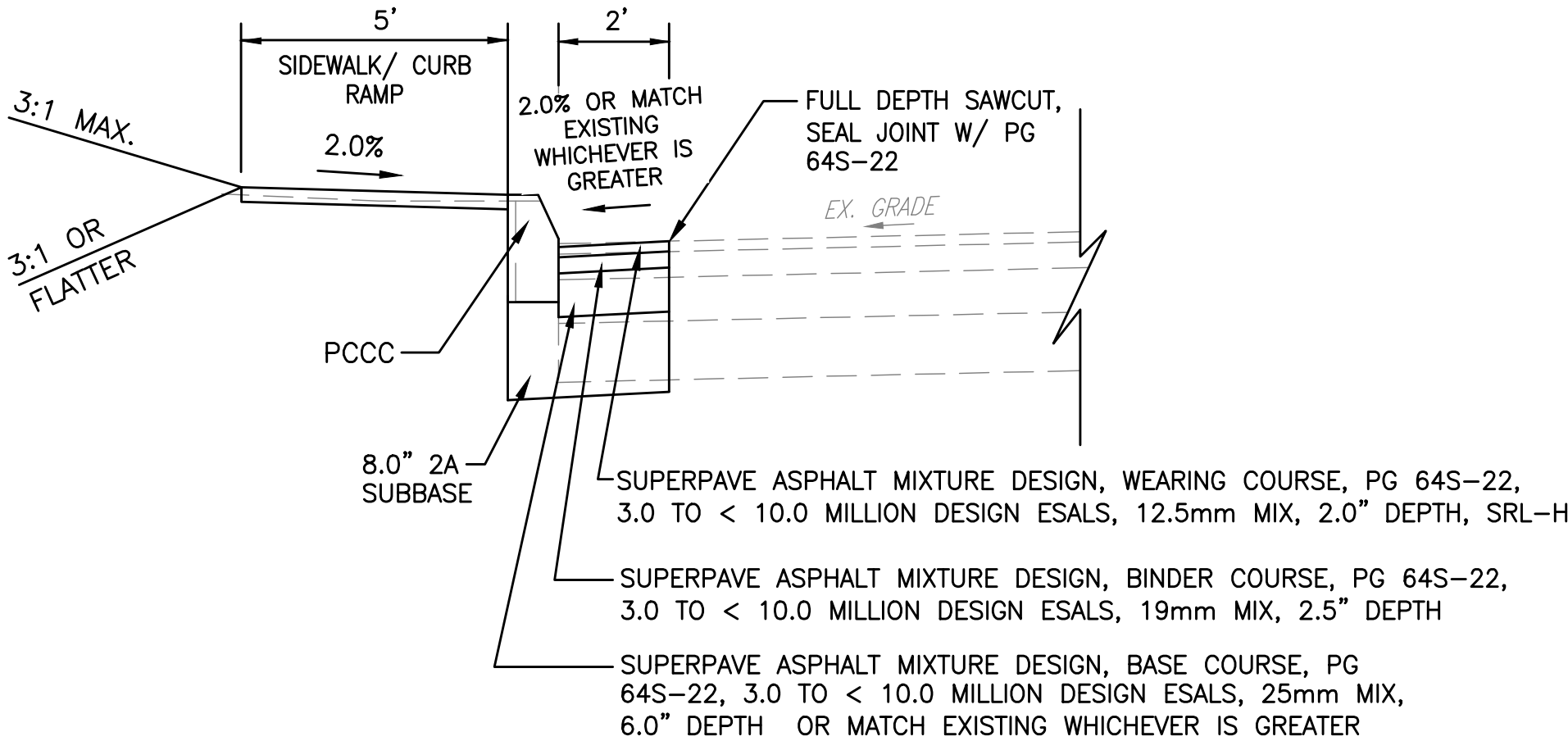
EXISTING PENNDOT BITUMINOUS PAVING SECTION DETAIL

S.R.0011 - SEGMENT 0130  
NOT TO SCALE

3.5" PAVED SHOULDERS, TYPE 1-SP, (L/R) - 8', 2005  
1.0" STABILIZED SHOULDER - 0', 1954

EXISTING PENNDOT BITUMINOUS SHOULDERS DETAIL

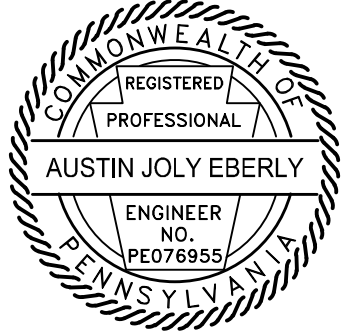
S.R.0011 - SEGMENT 0130  
NOT TO SCALE



TYPICAL FULL DEPTH PAVEMENT SECTION FOR

S.R.0011 - SEGMENT 0130  
NOT TO SCALE

DISTRICT	COUNTY	ROUTE	SECTION	SHEET
8-0	FRANKLIN	0011		3 OF 5
GREENCASTLE BOROUGH				
REVISION NUMBER	REVISIONS		DATE	BY
1	Per PennDOT Comments Dated 11-25-24		1-10-25	JAT
2	Supplement No.1		5-7-25	JAT



2 E. Market Street - Suite 2  
York, Pennsylvania 17401-1206  
Tel: (717) 846-4660  
www.consultingtrg.com



Project No:	109.007.24
File:	HOP Sub 2 Supp 1
Date:	10-10-2024
Drawn By:	JAT
Checked By:	AJE

GREENCASTLE BOROUGH  
HIGHWAY OCCUPANCY PERMIT PLAN  
FOR THE  
ANTRIM WAY (S.R.0011) & WALTER AVENUE  
ADA RAMP IMPROVEMENTS

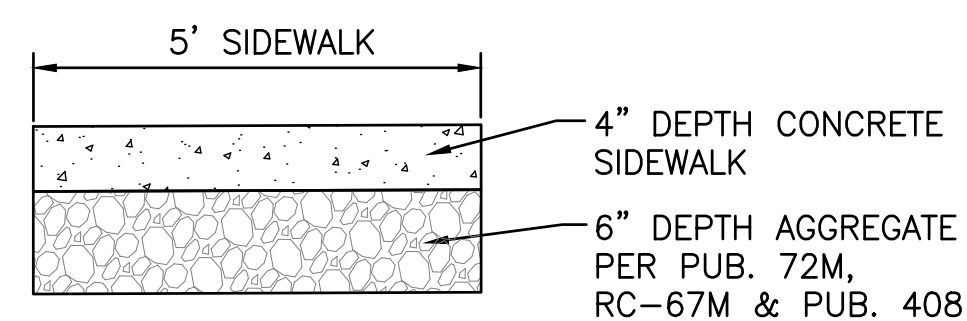
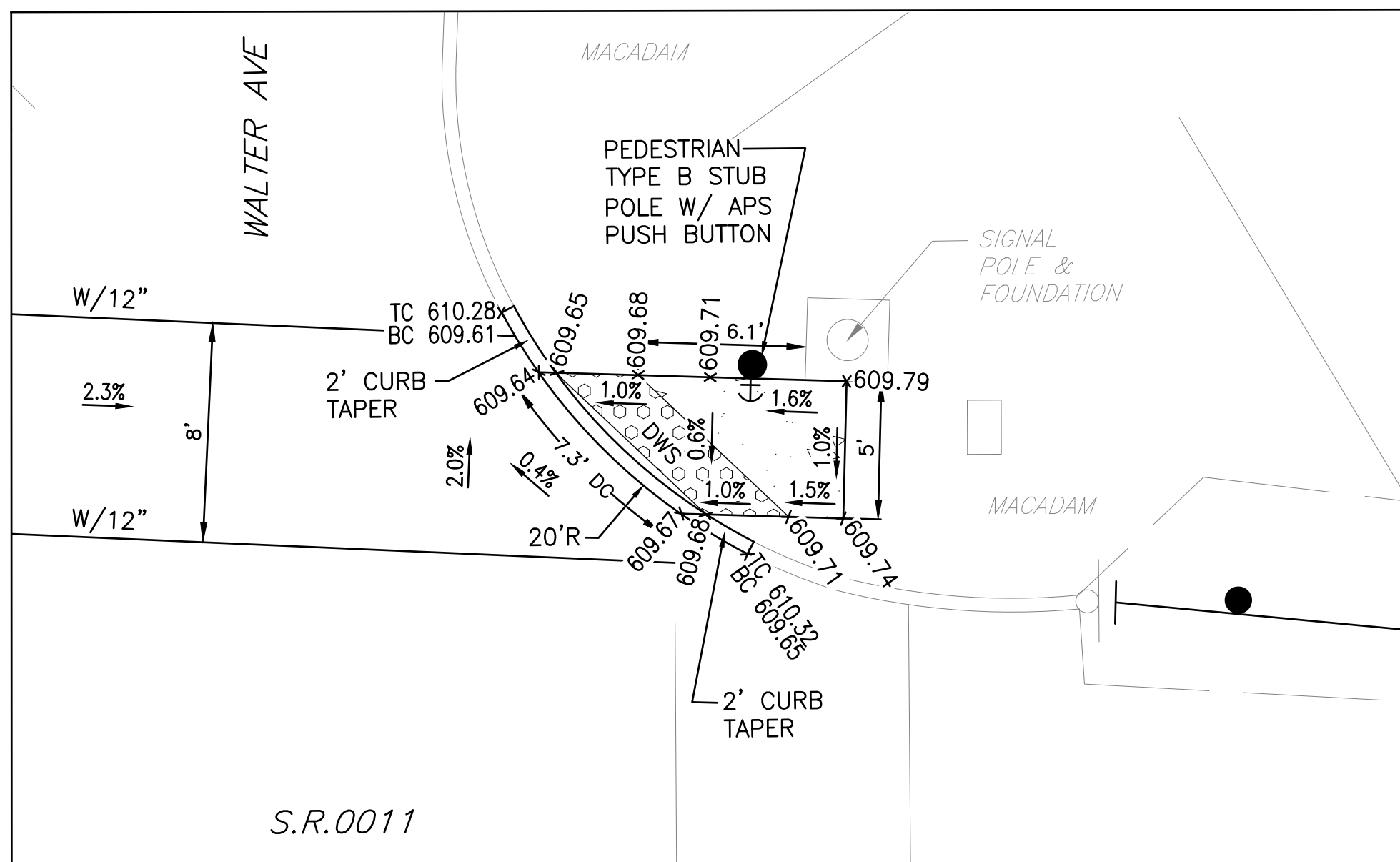
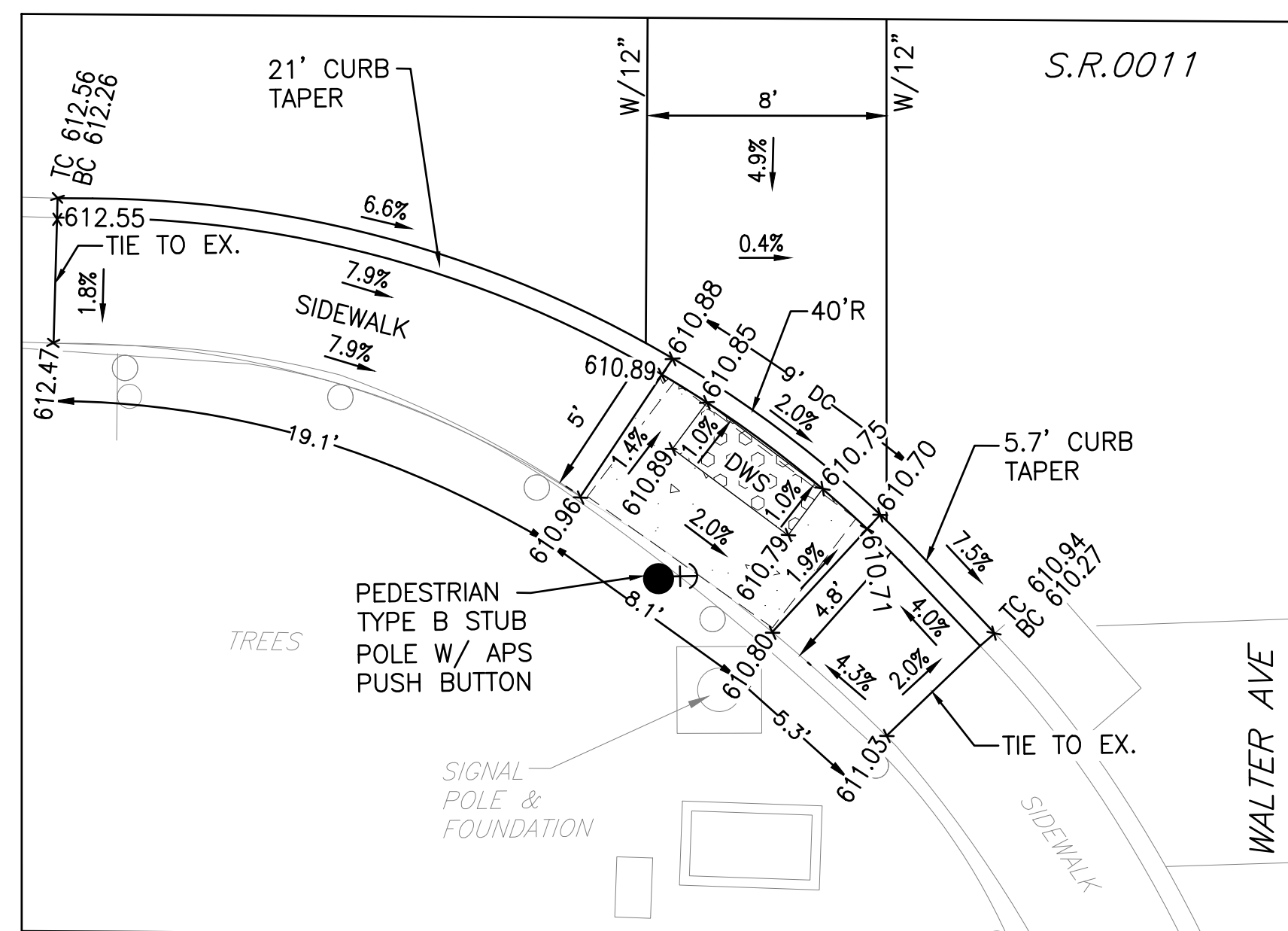
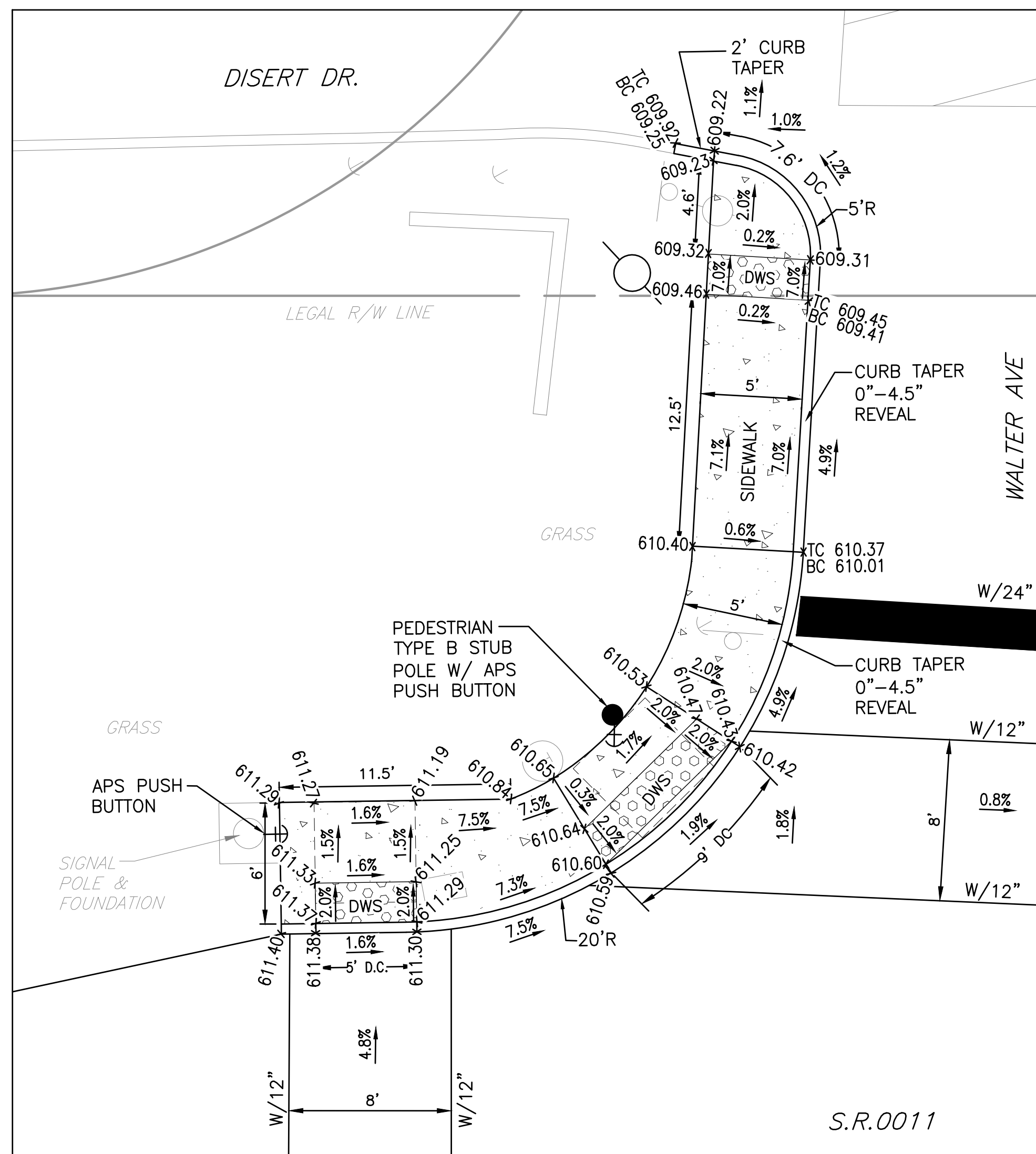
FRANKLIN COUNTY, PENNSYLVANIA  
GREENCASTLE BOROUGH

CONSTRUCTION  
PLAN









## DETAILS